



COMMUNITY REPORT

FY 2023



**ST. PATRICK
CENTER**

A MINISTRY OF CATHOLIC CHARITIES

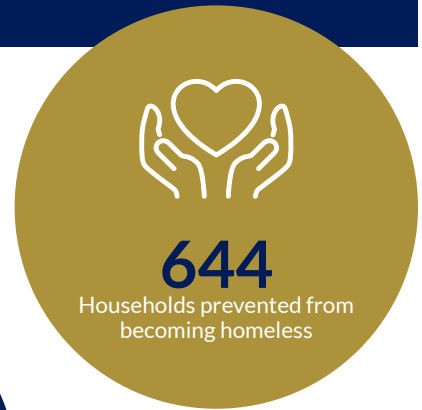
CATHOLIC CHARITIES
ARCHDIOCESE OF SAINT LOUIS

St. Patrick Center

In December 2023, St. Patrick Center expanded its workforce development program to the Central Café at Central Library in downtown St. Louis. Sacred Grounds Café is not just serving coffee, they are brewing change and empowering individuals to build a better tomorrow. Library customers and coffee lovers can enjoy handcrafted drinks made by St. Patrick Center clients enrolled in the barista training program. Barista training, a St. Patrick Center workforce development program, teaches clients new skills and on-the-job training in a coffee shop setting. Visit Sacred Grounds Café at Central Café inside the Central Library in downtown St. Louis (1301 Olive St, St. Louis, MO 63103).

PURPOSE STATEMENT

Transforming lives and working to create a community where everyone has access to sustainable housing, employment, and healthcare.



Fiscal Year 2023 was a significant year for St. Patrick Center, as we commemorated its 40th year of bringing the healing, help, and hope of Jesus Christ with a compassionate, caring presence to those experiencing homelessness or at risk of homelessness. Last year, we served over 4,200 clients in various ways to ensure access to sustainable housing, employment, and healthcare. 479 families found housing, and 644 families stayed housed. We served over 740 veterans and their families and helped 155 clients secure employment. The support of our staff, our funders, and our volunteers, helped shape this reality in our community, empowering thousands of individuals, and families throughout the year.”

— Amanda Laumeier, Executive Director, St. Patrick Center

Client Success Story

St. Patrick Center's Women's Night Program assists women experiencing homelessness, helping them to overcome barriers to permanent housing. Women's Night Program provides case management, individual counseling, treatment planning, and emergency shelter for up to 30 women who have behavioral health issues and/or substance abuse issues. These women are connected with various agency programs as well as community partners. Susan was once a client in the Women's Night Program, coming to St. Patrick Center after a long, cold month of living on the street. She was forced out of her uncle's home—her escape from an abusive relationship—after her uncle passed away and his son (Susan's nephew) took possession of the home. He promptly forced Susan out, leaving her on the street with few belongings to her name. Outside in the cold and constantly fearing for her life, Susan fell ill and ended up in the hospital for a week. Once out of the hospital and back on the street, Susan was taken to a women's shelter where she spent a short time before joining the Women's Night Program at St. Patrick Center. Susan was there for a few months before receiving a housing voucher and moving into permanent housing. "I knew when I walked into that [first] house it was mine," says Susan.

Volunteer Numbers

3,245 Volunteers (individuals & families, groups, corporate groups, and casserole volunteers)

34,411 Hours volunteered (individuals & families, board members, groups, and casserole volunteer hours)

\$1,094,269.80 Monetary value of volunteers (National Average for one hour of volunteer service is \$31.80. Source - www.independentsector.org)

Partnerships



Contact

St. Patrick Center
800 N. Tucker Blvd.
St. Louis, MO 63101
314.802.0700
stpatrickcenter.org

